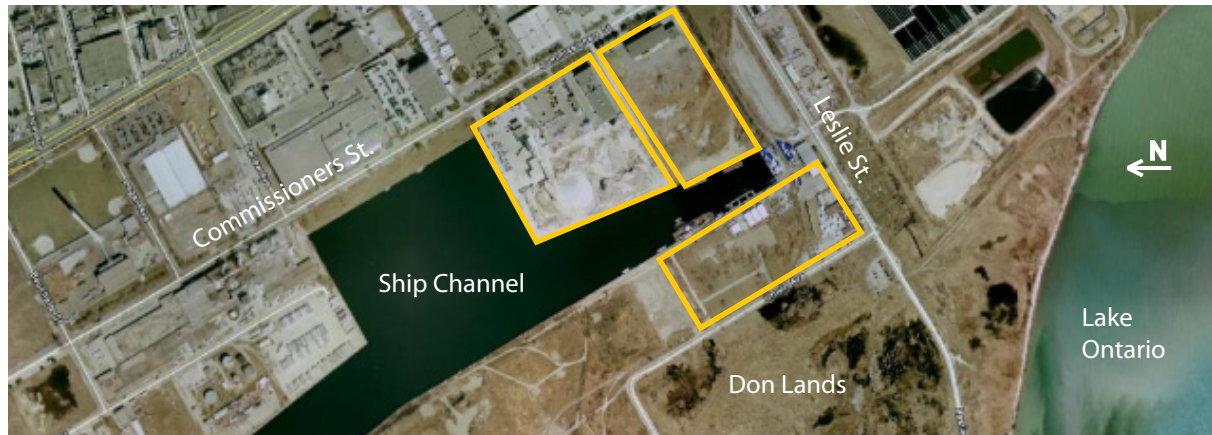


CONCRETE CAMPUS Toronto, Ontario

R.E. Millward & Associates project managed a rezoning process for four aggregate companies wanting to locate along the ship channel in Toronto's Port Lands. The project involved coordinating the efforts of concrete/aggregate producers, multiple consultants, and other public agencies. A full public process was carried out with extensive community consultation.



Client:
Strada Aggregates

Services Rendered:
Project Manager
Chief Planner

Project dates:
2004 through 2008

Project Reference:
Jim DeGasperis,
President,
Strada Aggrete Inc.
P. 905.660.6000